



## SolaMaster® Series Material Specifications:

**Roof Dome:** Outer dome is UV and impact resistant for extended life. Injection molded acrylic classified as CC2 material, 0.125 in (3.2 mm) thick, with visible light transmission of 92% and ultra violet light transmission of 0.03%. Patented Raybender® 3000 Technology (variable prism optic molded into dome) to capture low angle sunlight and limit high angle sunlight.

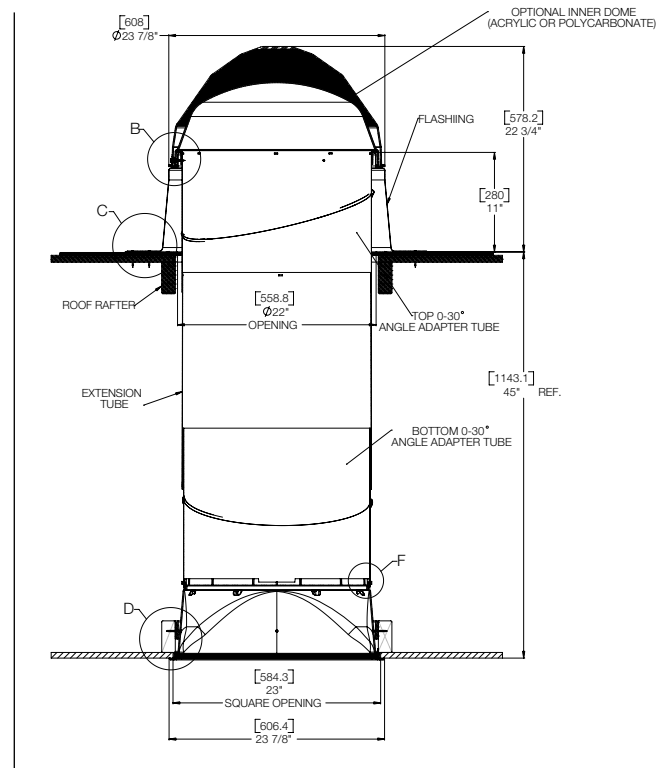
### Optional Inner Dome:

**Injection molded acrylic** classified as CC2 material, 0.115 in (3 mm) thick to meet ENERGY STAR requirement

**Injection molded polycarbonate** classified as CC1 material, 0.115 in (3 mm) thick to meet ENERGY STAR and High Velocity Wind Zone requirements.

**Permeable dome seal:** Adhesive backed weatherstrip locks out dust and bugs, but allows moisture to escape.

**Dome ring** to prevent thermal bridging between base flashing and tubing and channel condensed moisture out of tubing. Injection molded high impact PVC.



**Roof Flashing Base:** One piece, seamless, leak-proof flashing functioning as base support for dome and top of tube.

**Flashing Options:** 4-in, 8-in 11-in high (100 mm, 200 mm, 280 mm) or curb cap with inside dimensions 27 in x 27 in (685 mm x 685 mm) to cover curb by others.

**Reflective Tube:** Aluminum sheet, thickness 0.018 in (0.5 mm)

**0-30 degree angle adapters** for ease of installation. The 21 in (530 mm) diameter tubes fit between 24 in (600 mm) on center framing.

**Extension tubes** are 24 in (600 mm) in length, for installations in excess of 50 ft (15 m). Optional 0-90 degree extension tube kit also available.

**Spectralight® Infinity material**, fabricated from aluminum sheet meeting ASTM B 209 requirements, alloy and temper required by the manufacturer to suit forming operations and finish requirements.

**Interior Finish:** Spectralight Infinity high reflectance specular finish on exposed reflective surface. Specular reflectance for visible spectrum (400 nm to 760 nm) greater than 99 percent. Total solar spectrum reflectance (400 nm to 2500 nm) less than 93 percent.

**Color:** a\* and b\* (defined by CIE L\*a\*b color model) shall not exceed plus 2 or be less than minus 2 as determined in accordance to ASTM E 308.

**Transition Box:** 2 ft x 2 ft (600 mm x 600 mm) ceiling mounted box transitioning from round tube to square ceiling assembly fits standard suspended ceiling grids or hard ceiling. Opaque polymeric material classified as CC2, Class C, 0.110 in (2.8 mm) thick.

**Natural Effect Lens** made of acrylic, classified as CC2, Class C, 0.060 in (1.5 mm) thick with an open cell foam seal to minimize condensation and bug, dirt, and air-infiltration.

**Diffuser Assembly:** Square diffuser panel with extruded aluminum frame fits into the transition box and complements traditional light fixtures.

**Diffuser Options:** OptiView® Diffuser or Prismatic Diffuser.