

Project: _____ Location: _____ Type: _____

Product Specifications Appear in CSI Division 08, Section 08 62 23.

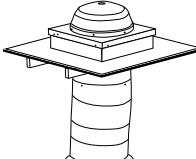
For budgeting and quotations use only. Qty: _____

S 3 3 0 **D** **S** - **C** - **DA** - **F** - - **E** - **L** - -

1 2 3 4 5 6 7 8

1 Model





S330 DS-C = SolaMaster® Series Solatube 330 DS-C Closed Ceiling (21 in/530 mm Daylighting System)



2 Dome

DA = Acrylic Dome

3 Flashings

	F04 = 4-inch Self Mounted		F08 = 8-inch Self Mounted
	F11 = 11-inch Self Mounted		FCM = Curb Cap (Curb By Others)

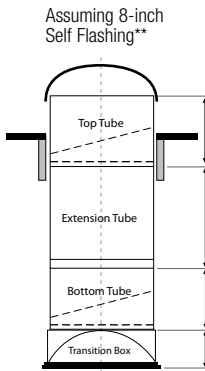
4 Top Tube and Angle Adapter Options

TA* = 16" Top Tube Angle Adapter
BA = 16" Bottom Tube Angle Adapter (required or specify AK)
AK = 16" Top Tube Angle Adapter* and 16" Bottom Tube Angle Adapter Kit

5 Extension Tubes Required

Run measured from top of flashing to bottom of ceiling plane along centerline of tubing. (Allow for 2" overlap)



E01* = One Extension - Max Run = 50"
E02* = Two Extension Tubes - Max Run = 72"
E03* = Three Extension Tubes - Max Run = 94"
E04* = Four Extension Tubes - Max Run = 116"
E05* = Five Extension Tubes - Max Run = 138"
E06* = Six Extension Tubes - Max Run = 160"
E07* = Seven Extension Tubes - Max Run = 182"
E08* = Eight Extension Tubes - Max Run = 204"
E09* = Nine Extension Tubes - Max Run = 226"
E10* = Ten Extension Tubes - Max Run = 248"
EXX* = Total Run Length to be Determined by Bidding Contractor



Assuming 8-inch Self Flashing**

*Compatible with dome ring to be used as a top tube or extension tube
 **Total tube run will vary depending upon flashing used.

6 Diffuser/Ceiling Assembly

	L1 = OptiView® Diffuser		L2 = Prismatic Diffuser
---	--------------------------------	---	--------------------------------

Diffuser/Ceiling Assembly includes:

- Transition Box
- Natural Effect Lens

7 Options Leave blank if not desired.

Photos with descriptions are available in the product catalog at www.solatube.com

A1 = One 0-90 Degree Extension Tube Kit (Angle Adapter)
A2 = Two 0-90 Degree Extension Tube Kits (Angle Adapter)
B = Security Bar
D = Daylight Dimmer
DV = 0-10 V Daylight Dimmer
E = Wire Suspension Kit (50 ft)
FI = Flashing Insulator (Only available for Self Mounted Flashing)
P = PVC Boot
 Verify Availability. Special order requires 60-day lead time and order of 100 or more. Material to be supplied by roofing contractor per Solatube Intl. spec.

PB = Dome Edge Protection Band
SK = Dome Security Kit
SS = Secondary Diffuser
T12* = Roof Flashing Turret Extension 12 in/300 mm
T24* = Roof Flashing Turret Extension 24 in/600 mm
T36* = Roof Flashing Turret Extension 36 in/900 mm
T48* = Roof Flashing Turret Extension 48 in/1200 mm
 *Specify additional extension tubes in #5

8 Measurement Standard

M = Metric **I** = Imperial

Accessories

Order separately. See accessories section of CSI 3-part spec.

SW = Low voltage switch (white) required to operate Solatube Daylight Dimmers (Type D only). Note: Only one switch is required per set of synchronously controlled dimmers.
CA = Two Conductor Low Voltage Cable (500 ft)

Example

S330 DS-C - DA - F 0 8 - BA - E 0 1 - L 2 - E - I

Solamaster® Series 330 DS-C (21 in/530 mm Daylighting System), Acrylic Dome, 8-Inch High Self Mounted Flashing, 16" Bottom Tube Angle Adapter, One Extension Tube, Transition Box, Natural Effect Lens, Prismatic Diffuser, and Wire Suspension Kit. For non-metric installations.

SolaMaster® Series Material Specifications:

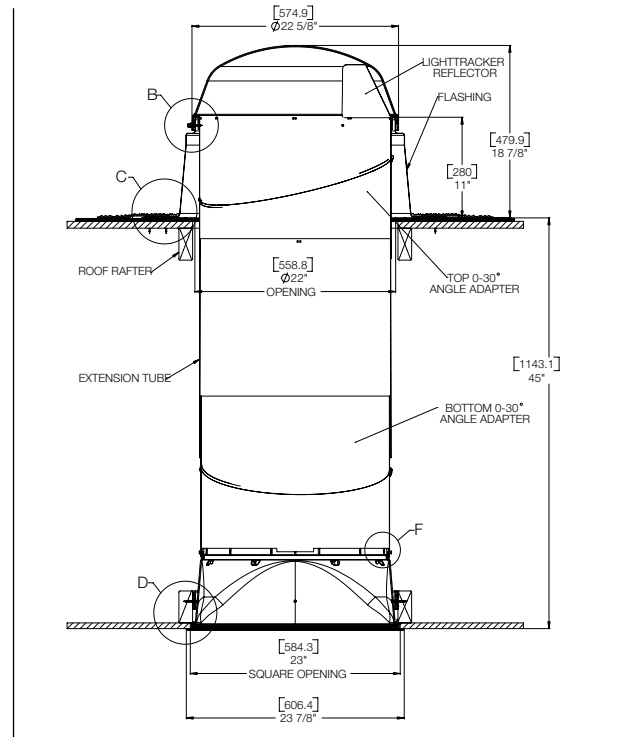
Roof Dome: Dome is UV and impact resistant for extended life. Injection molded acrylic classified as CC2 material, 0.143 in (3.7 mm) thick, with visible light transmission of 92% and ultra violet light transmission of 0.03%.

LightTracker™ Reflector increases daylight collection and harvesting for low sun angles, resulting in increased light output. Spectralight® Infinity material, see below for specifications.

Permeable dome seal: Adhesive backed weatherstrip locks out dust and bugs, but allows moisture to escape.

Dome ring to prevent thermal bridging between base flashing and tubing and channel condensed moisture out of tubing. Injection molded high impact PVC.

Roof Flashing Base: One piece, seamless, leak-proof flashing functioning as base support for dome and top of tube.



Flashing Options: 4-in, 8-in 11-in high (100 mm, 200 mm, 280 mm) or curb cap with inside dimensions 27 in x 27 in (658 mm x 685 mm) to cover curb by others.

Reflective Tube: Aluminum sheet, thickness 0.018 in (0.5 mm)

0-30 degree angle adapters for ease of installation. The 21 in (530 mm) diameter tubes fit between 24 in (600 mm) on center framing.

Extension tubes are 24 in (600 mm) in length, for installations in excess of 50 ft (15 m). Optional 0-90 degree extension tube kit also available.

Spectralight® Infinity material, fabricated from aluminum sheet meeting ASTM B 209 requirements, alloy and temper required by the manufacturer to suit forming operations and finish requirements.

Interior Finish: Spectralight Infinity high reflectance specular finish on exposed reflective surface. Specular reflectance for visible spectrum (400 nm to 760 nm) greater than 99 percent. Total solar spectrum reflectance (400 nm to 2500 nm) less than 93 percent.

Color: a^* and b^* (defined by CIE $L^*a^*b^*$ color model) shall not exceed plus 2 or be less than minus 2 as determined in accordance to ASTM E 308.

Transition Box: 2 ft x 2 ft (600 mm x 600 mm) ceiling mounted box transitioning from round tube to square ceiling assembly fits standard suspended ceiling grids or hard ceiling. Opaque polymeric material classified as CC2, Class C, 0.110 in (2.8 mm) thick.

Natural Effect Lens made of acrylic, classified as CC2, Class C, 0.060 in (1.5 mm) thick with an open cell foam seal to minimize condensation and bug, dirt, and air infiltration.

Diffuser Assembly: Square diffuser panel with extruded aluminum frame fits into the transition box and complements traditional light fixtures.

Diffuser Options: OptiView® Diffuser or Prismatic Diffuser.